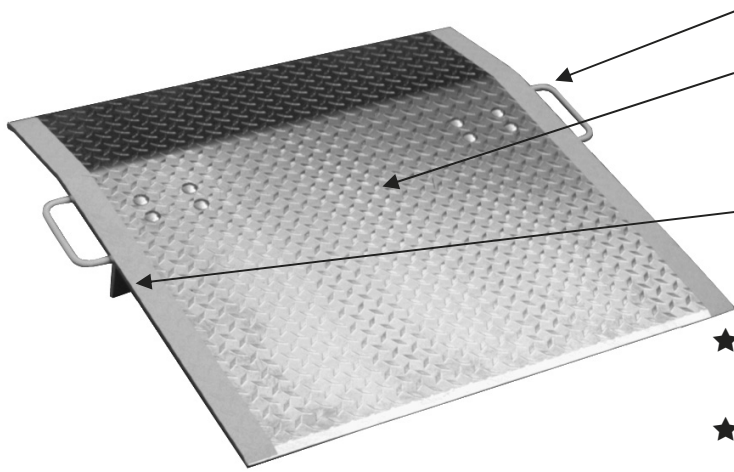


# ALUMINUM TRUCK DOCKPLATES

## Best Selling Dockplates in America



**Handles** provide easy lifting and moving

**High-traction, safety treadplate surface** gives positive traction for equipment and safe footing for personnel

**Bolt-on legs** allow for quick field repair. Easily reversed for refrigerated trucks.

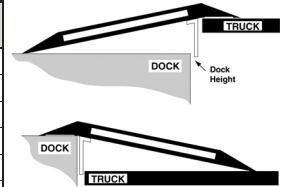
- ★ **Beveled edges** provide smooth entry and exit
- ★ **Engineered bend** keeps the edges of the dockplate flush with both dock and truck
- ★ **2-year warranty**

### Dockplate Size & Specification Charts

			EL SERIES 5/16" Plate				E SERIES 3/8" Plate				EH SERIES 1/2" Plate			
SIZE (W x L)	MAX HT. DIF. (IN.)	LEG LGTH.	CAP. (LBS)	PART #	WT (LBS)	Sug. List	CAP. (LBS)	PART #	WT (LBS)	Sug. List	CAP. (LBS)	PART #	WT (LBS)	Sug. List
30x24	3	7	2,196	EL-3024	42	\$169.43	3,000	E-3024	46	\$186.05	5,200	EH-3024	55	\$230.34
30x30	4	7	1,757	EL-3030	47	\$217.06	2,300	E-3030	53	\$219.27	4,100	EH-3030	64	\$274.64
30x36	5	7	1,464	EL-3036	53	\$217.06	1,800	E-3036	60	\$251.39	3,500	EH-3036	72	\$312.29
30x48	7	9	1,098	EL-3048	68	\$266.89	1,400	E-3048	76	\$320.03	2,600	EH-3048	94	\$403.10
<b>36x24</b>	<b>3</b>	<b>7</b>	<b>2,636</b>	<b>EL-3624</b>	<b>46</b>	<b>\$188.26</b>	<b>3,600</b>	<b>E-3624</b>	<b>51</b>	<b>\$219.27</b>	6,200	EH-3624	62	\$264.67
36x30	4	7	2,108	EL-3630	53	\$217.06	3,000	E-3630	58	\$251.39	5,100	EH-3630	72	\$312.29
<b>36x36</b>	<b>5</b>	<b>7</b>	<b>1,757</b>	<b>EL-3636</b>	<b>59</b>	<b>\$245.84</b>	<b>2,500</b>	<b>E-3636</b>	<b>68</b>	<b>\$296.79</b>	4,300	EH-3636	82	\$377.62
36x48	7	9	1,318	EL-3648	76	\$305.65	1,900	E-3648	87	\$370.99	3,000	EH-3648	108	\$472.86
42x24	3	7	3,075	EL-4224	51	\$227.03	4,300	E-4224	57	\$239.21	7,200	EH-4224	68	\$300.11
42x30	4	7	2,460	EL-4230	58	\$264.67	3,300	E-4230	64	\$281.28	5,900	EH-4230	81	\$352.16
42x48	7	9	1,537	EL-4248	85	\$382.06	2,100	E-4248	96	\$421.92	3,500	EH-4248	123	\$575.85
48x24	3	7	3,514	EL-4824	55	\$227.03	5,200	E-4824	62	\$255.81	8,200	EH-4824	75	\$325.58
48x30	4	7	2,811	EL-4830	64	\$264.67	4,100	E-4830	72	\$312.29	6,300	EH-4830	90	\$396.46
<b>48x36</b>	<b>5</b>	<b>7</b>	<b>2,343</b>	<b>EL-4836</b>	<b>72</b>	<b>\$303.43</b>	<b>3,500</b>	<b>E-4836</b>	<b>83</b>	<b>\$359.92</b>	5,300	EH-4836	104	\$442.97
48x42	6	9	2,008	EL-4842	85	\$382.06	3,000	E-4842	96	\$415.29	4,300	EH-4842	122	\$524.91
<b>48x48</b>	<b>7</b>	<b>9</b>	<b>1,757</b>	<b>EL-4848</b>	<b>94</b>	<b>\$382.06</b>	<b>2,600</b>	<b>E-4848</b>	<b>107</b>	<b>\$465.11</b>	3,800	EH-4848	137	\$564.78
48x54	8	12					2,200	E-4854	121	\$523.80	3,300	EH-4854	154	\$664.45
<b>48x60</b>	<b>10</b>	<b>12</b>					<b>1,800</b>	<b>E-4860</b>	<b>132</b>	<b>\$550.38</b>	2,900	EH-4860	168	\$713.17
54x24	3	7	3,953	EL-5424	59	\$264.67	5,400	E-5424	65	\$300.11	9,100	EH-5424	83	\$390.91
54x30	4	7	3,163	EL-5430	69	\$362.13	4,300	E-5430	78	\$365.44	7,100	EH-5430	99	\$455.15
54x36	5	7	2,636	EL-5436	79	\$362.13	3,700	E-5436	90	\$410.84	5,300	EH-5436	114	\$530.44
54x48	7	9	1,977	EL-5448	103	\$459.58	2,600	E-5448	118	\$530.44	4,200	EH-5448	150	\$685.49
54x60	10	12					2,000	E-5460	146	\$633.43	3,400	EH-5460	185	\$857.12
60x24	3	7	4,393	EL-6024	64	\$264.67	5,700	E-6024	71	\$306.76	10,000	EH-6024	90	\$390.91
60x30	4	7	3,514	EL-6030	75	\$362.13	4,600	E-6030	85	\$376.52	7,800	EH-6030	108	\$480.60
60x36	5	7	2,928	EL-6036	85	\$362.13	4,100	E-6036	98	\$435.20	6,600	EH-6036	125	\$557.03
60x42	6	9	2,510	EL-6042	100	\$459.58	3,500	E-6042	115	\$499.44	5,500	EH-6042	148	\$638.98
60x48	7	9	2,196	EL-6048	111	\$459.58	2,900	E-6048	129	\$564.78	4,800	EH-6048	164	\$723.14
60x54	8	12					2,400	E-6054	146	\$630.12	4,100	EH-6054	189	\$806.19
60x60	10	12					2,000	E-6060	160	\$691.01	3,700	EH-6060	203	\$901.42
72x30	4	7	4,217	EL-7230	85	\$362.13	5,400	E-7230	98	\$441.86	9,500	EH-7230	125	\$549.28
72x36	5	7	3,514	EL-7236	99	\$533.77	4,300	E-7236	118	\$518.26	7,800	EH-7236	145	\$652.27
72x48	7	9	2,636	EL-7248	129	\$537.10	3,400	E-7248	151	\$677.74	5,900	EH-7248	191	\$857.12

Popular sizes in bold print.

DOCKPLATES STANDARD WITH 2 HANDLES—SUBSTITUTE HAND SLOTS AT NO EXTRA CHARGE.



### How to select the correct dockplate

**Step 1.** Determine capacity—weight of pallet jack plus maximum load carried.

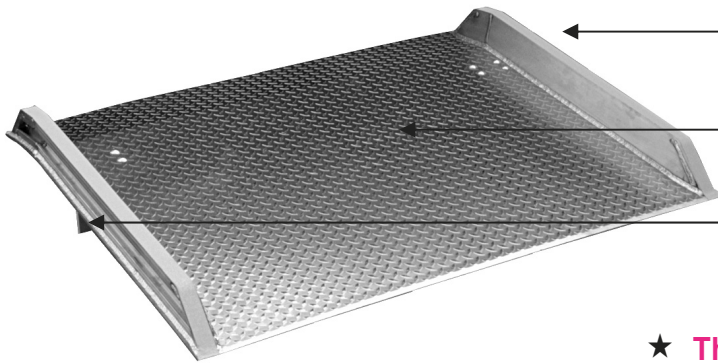
**Step 2.** Determine width—add 12" to the widest load.

**Step 3.** Determine length—length is determined by height difference between dock and truck floor.

# ALUMINUM TRUCK DOCKBOARDS

**The #1 Dockboard  
in America  
just got better**

- ★ **Stronger, lighter, and more durable than steel curb boards!**
- ★ **Quick-Ship availability on popular sizes!**



← Light weight, welded aluminum curbs provide unbeatable strength and durability

← Skid resistant surface

← Bolt-on legs allow for quick field repair. Easily reversed for refrigerated trucks

**plus** our exclusive **2-year warranty**

**Compare the weight and capacity of our L7 Dockboards with the EH Series Dock Plate !**

- ★ **The strongest boards in the industry.** All of our boards are designed per Aluminum Association Standards.
- ★ **Increased load capacities** to fit all your needs
- ★ **Boards are actual thickness**, full 5/16", 3/8", 1/2"

SIZE (W x L)	MAX HT. DIFF (IN.)	LEG LGTH (IN)	5,000-7,000 LB CAPACITY 5/16" aluminum 3" welded curb				10,000 LB CAPACITY 3/8" aluminum 3.5" welded curb				10,000-14,000 LB CAPACITY 3/8" aluminum 4" welded curb				12,000-17,000 LB CAPACITY 1/2" aluminum 4" welded curb			
			CAP. (LBS)	PART #	WT (LBS)	Sug. List	CAP. (LBS)	PART #	WT (LBS)	Sug. List	CAP. (LBS)	PART #	WT (LBS)	Sug. List	CAP. (LBS)	PART #	WT (LBS)	Sug. List
<b>36x36</b>	<b>5</b>	<b>7</b>	<b>7,000</b>	<b>L7-3636</b>	<b>67</b>	<b>\$380.95</b>												
36x48	7	9	7,000	L7-3648	89	\$458.47	10,000	L10-3648	109	\$522.70								
36x60	10	12	7,000	L7-3660	111	\$523.80	10,000	L10-3660	136	\$620.15								
<b>48x36</b>	<b>5</b>	<b>7</b>	<b>7,000</b>	<b>L7-4836</b>	<b>80</b>	<b>\$441.86</b>	10,000	L10-4836	97	\$497.23	14,000	L14-4836	104	\$537.10	17,000	L17-4836	125	\$610.19
<b>48x48</b>	<b>7</b>	<b>9</b>	<b>7,000</b>	<b>L7-4848</b>	<b>107</b>	<b>\$542.63</b>	10,000	L10-4848	130	\$615.73	14,000	L14-4848	139	\$666.66	17,000	L17-4848	167	\$842.74
48x60	10	12	7,000	L7-4860	133	\$642.30	10,000	L10-4860	162	\$736.44	14,000	L14-4860	174	\$800.66	17,000	L17-4860	209	\$1,021.04
<b>60x36</b>	<b>5</b>	<b>7</b>	<b>7,000</b>	<b>L7-6036</b>	<b>93</b>	<b>\$503.88</b>	<b>10,000</b>	<b>L10-6036</b>	<b>113</b>	<b>\$593.58</b>	<b>14,000</b>	<b>L14-6036</b>	<b>120</b>	<b>\$610.19</b>	17,000	L17-6036	146	\$758.59
<b>60x48</b>	<b>7</b>	<b>9</b>	<b>7,000</b>	<b>L7-6048</b>	<b>124</b>	<b>\$623.47</b>	<b>10,000</b>	<b>L10-6048</b>	<b>151</b>	<b>\$707.64</b>	<b>14,000</b>	<b>L14-6048</b>	<b>160</b>	<b>\$765.22</b>	<b>17,000</b>	<b>L17-6048</b>	<b>195</b>	<b>\$962.35</b>
<b>60x60</b>	<b>10</b>	<b>12</b>	<b>7,000</b>	<b>L7-6060</b>	<b>155</b>	<b>\$738.65</b>	<b>10,000</b>	<b>L10-6060</b>	<b>188</b>	<b>\$851.60</b>	<b>14,000</b>	<b>L14-6060</b>	<b>200</b>	<b>\$923.58</b>	<b>17,000</b>	<b>L17-6060</b>	<b>244</b>	<b>\$1,158.36</b>
60x72	12	18	5,000	L5-6072	193	\$846.06					12,000	L12-6072	248	\$1,118.49	15,000	L15-6072	300	\$1,426.35
72x36	5	7	5,000	L5-7236	106	\$564.78					12,000	L12-7236	136	\$669.99	15,000	L15-7236	167	\$1,066.44
72x48	7	9	5,000	L5-7248	141	\$704.32					12,000	L12-7248	181	\$861.57	15,000	L15-7248	223	\$1,098.55
72x60	10	12	5,000	L5-7260	177	\$847.18					12,000	L12-7260	226	\$1,055.36	15,000	L15-7260	279	\$1,341.08
72x72	12	18													12,000	L12-7272	342	2,163.89

Popular sizes in bold print

## ACCESSORIES

### Handles

Add lift handles for easy movement. (only available on 5,000 and 7,000 capacity boards)

**\$21.04 / pair**

### Lifting Chains

Heavy-duty chains for fork-lift moving of dockboards. Quickly and easily attached onto the dockboard curbs with heavy-duty steel hooks. (Recommended for boards 10,000 lbs. capacity and up)

**\$78.63 / set**

# ALUMINUM TRUCK DOCKBOARDS

## How to Choose a Dockboard

Step 1. Determine Capacity — add the weight of the forklift and the weight of the maximum load to be carried.

Step 2. Determine Width — The width of the dockboard should be at least 18 inches wider than your widest equipment passing over the board. Remember, safety curbs take up 6 inches of usable width.  
Example: A 60-inch dockboard has 54 inches of usable space.

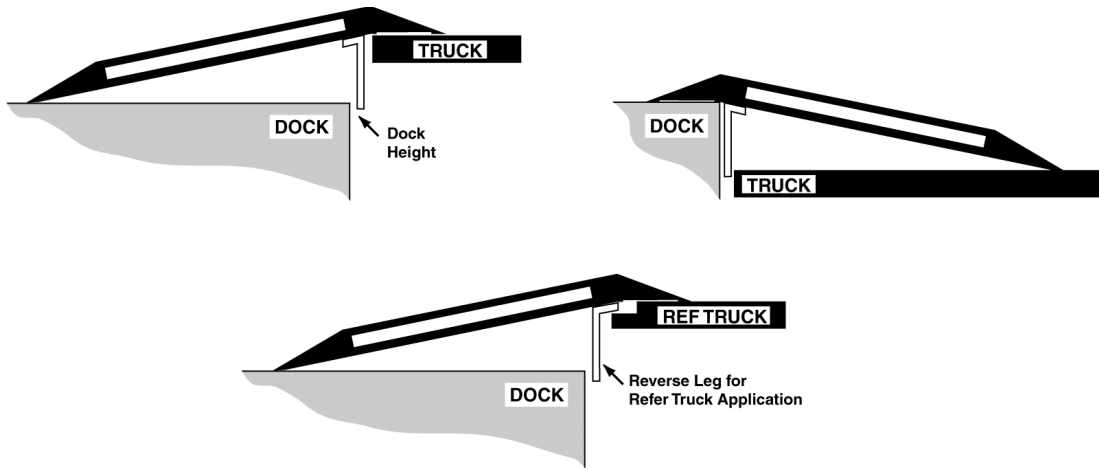
Step 3. Determine Length — You need to know the maximum difference between the height of the dock and the height of the highest truck bed.

1. Max. Truck Height \_\_\_\_\_
2. Minus Dock Height \_\_\_\_\_
3. Equals Height Difference \_\_\_\_\_

Using chart below, determine the length of the board you need. An 11-degree bend is standard. Example: If the maximum height difference is 7 inches, a board at least 48 inches long is required.

Slope Angle	MAXIMUM HEIGHT DIFFERENCE (INCHES)																		
	1	2	3	4	5	5.5	6	7	8	8.5	9	10	11	12	13	14	15	16	
8° Bend*			30	36	42	48	54	60	66	72	78	84	90						
11° Bend (STD)				30	36		42	48		54		60	66	72	78	84	90	96	

\*Note: An 11° bend is standard. Boards with an 8° bend are special order and are not returnable.



### To Order Replacement Legs:

Board Length	Leg Length	To Order 1 Leg (no hardware)	Price Ea.	To Order a Pair of Legs (includes hardware)	Price/Pair
36 inches	7 inch	P/N 8062-001	\$18.28	P/N 3500-L7	\$40.02
48 inches	9 inch	P/N 8062-002	\$18.28	P/N 3500-L9	\$40.02
60 inches	12 inch	P/N 8062-003	\$18.28	P/N 3500-L12	\$40.02
72 inches	18 inch	P/N 8062-004	\$24.91	P/N 3500-L18	\$53.28