

THERMAL READY

840 DENIER FREEZERWEAR

THIS IS THE FREEZER WEAR THAT YOU HAVE BEEN LOOKING FOR!

IT'S TOUGH, WARM, AND INEXPENSIVE!

THERMAL READY "840 DENIER" FREEZER WEAR FEATURES:

- Extremely tuff and abrasion resistant 840 denier blue nylon outer shell!
The polyurethane coated shell is water-resistant and air tight!
- Ultra-warm 12.7 oz. (300 gram) polyester "warm-plus" insulation
- Self-repairing YKK zippers with protective snap-over storm flaps
- Stress points reinforced with rivets
- Rugged double needle, quilt-through construction with safety-stitched and bound seams

**GREEN NOW
IN STOCK!**

ONE LOW PRICING FOR ALL SIZES...
NO EXTRA CHARGE FOR TALLS, SHORTS,
2X, 3X, 4X!

COMFORT
-50°F
RATING

\$78.50



Short:
S, M, L, XL

Regular:
S, M, L, XL, 2X, 3X

Tall:
M, L, XL, 2X, 3X

MMH #22013 TH **Thermal Ready 1-Pc. Suit**

- Pile (fur-like) collar
- Leg zippers to above knees
- Chest pocket and 2 large lower pockets w/ snap flaps
- Heavy knit cuffs

\$58.00



MMH #34020 TH **Thermal Ready Coat**

- 3 insulated patch pockets w/ snap flaps
- Pile (fur-like) collar
- Elastic on back for fit

Regular:
S, M, L, XL, 2X, 3X, 4X

Tall: M, L, XL, 2X, 3X

\$58.00



Short:
XS, S, M, L, XL

Regular:
S, M, L, XL, 2X, 3X, 4X

Tall:
M, L, XL, 2X, 3X

MMH #92001 TH **Thermal Ready Trouser**

- Full elastic suspenders
- Hand warmer pockets
- Hi-bib front and back
- Leg zippers to above knee

MODERN
MATERIAL
HANDLING
CO., INC.

CALL: 1-800-255-9390

P.O. Box 5658 ♦ 2 Commercial Drive
Greenville, SC 29606

PH 864-242-9990 ♦ FAX 864-271-2892

**CALL US
TODAY !**

Walls® "BLIZZARD-PRUF"

Economical Freezer Wear

\$43.50

ANY SIZE



#35802

**"BLIZZARD-PRUF"
BLACK FREEZER COAT**

Windproof and waterproof 200 denier nylon shell. Smooth, comfortable nylon taffeta lining. 210 grams of warm insulation. Front zipper with snap over storm flap. Zippered roomy front pockets.

Regular: M, R, L, XL, 2XL, 3XL
Tall: L, XL, 2XL



\$43.50

ANY SIZE

#93600

**"BLIZZARD-PRUF"
BLACK FREEZER
BIB-TROUSER**

Windproof and waterproof 200 denier outer nylon shell. 210 grams of warm insulation. Adjustable, heavy-duty elastic suspenders. Full-length self-repairing leg zippers with snap over storm flap. Elastic stirrups and waist, extra-tall front and back. Zippered roomy front pockets.

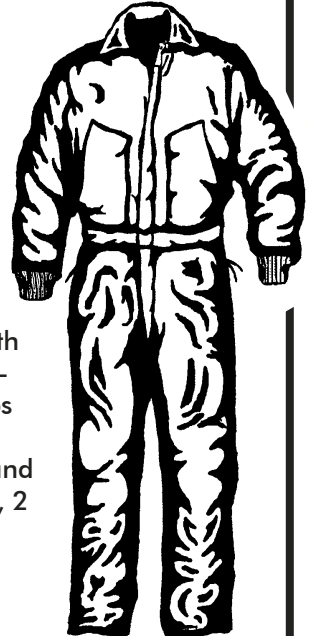
Short: S, M, L, XL, 2XL
Regular: S, M, L, XL,
2XL, 3XL
Tall: M, L, XL, 2XL

FEATURING:

"One-Low-Price-For-Any-Size"

#15200

**"BLIZZARD-PRUF"
BLACK 1-PC.
FREEZER SUIT**



10 oz. Insulation with tough 200 denier nylon shell. Comfortable smooth nylon taffeta lining. Leg zippers to hips with snap-over storm flap. Two-way front zipper with snaps at waist and neck. Banded waist with elastic inserts, and action back. 2 hip pockets, 2 chest pockets and 2 hand warmer pockets. Warm fleece collar & knit cuffs.

Short: S, M, L, XL, 2XL
Regular: S, M, L, XL, 2XL, 3XL
Tall: M, L, XL, 2XL

\$58.00
ANY SIZE

- **Most orders ship out the same day placed!**
- **All orders ship within 24 hours**

COMFORT

-10°F

RATING

\$49.50

ANY SIZE



#35801 NAVY BLUE (Formerly #35037)

"BLIZZARD-PRUF" BOMBER JACKET

Perhaps the most popular freezer coat that we have ever offered!
Everybody that sees one wants one!!

Sharp-looking popular waist-length design. 210 grams of warm polyester insulation. Tough 430 denier nylon outer shell. Front zipper with snap-over storm flap. Inside chest pocket, and 2 zippered welt pockets. Warm pile collar and knit cuffs and waistband. Pencil pocket on sleeve.

Regular: S, M, L, XL, 2XL, 3XL Tall: M, L, XL, 2XL, 3XL

Walls® POLAR 10

For Those Who Insist On The **VERY BEST**
In Industrial Freezer Wear

Walls "Polar 10" Garments Feature:

- 13 oz. Of Dupont Hollofil® insulation
- Tough 430-denier Caprolan® nylon urethane-coated shell (water repellent)
- Self-repairing zippers with protective snapped storm flaps

- Long-lasting Caprolan® nylon taffeta inside lining
- Stress points reinforced with rivets
- Proven double-needle, quilt-thru construction with safety-stitched and bound seams

POLAR 10 1-PC. SUIT

#22020NA Blue #22020LN Green

THE BEST one-piece freezer suit on the market. Has attached hood. Adjustable belt. Leg zippers to above the knee. Chest pocket and two large lower pockets with snap flaps. Knit cuffs.

Short: XS, S, M, L, 2XL

Reg: S, M, L, XL, 2XL, 3XL*, 4XL*, 5X* blue

Tall: M, L, XL, 2XL*, 3XL*, 4XL*, 4XL* blue, 5XL* blue

\$105.50 *



POLAR 10 BIB TROUSERS

#92029NA Blue #92029LN Green

THE BEST heavy-duty bib pants available! Extra warm for the coldest temperatures! Elastic suspenders for fit and movement. Hand warmer pockets! High back and front for extra cold protection.

Short: XS, S, M, L, XL, 2XL

Reg: S, M, L, XL, 2XL, 3XL*, 4XL*, 5XL*

Tall: M, L, XL, 2XL*, 3XL*, 4XL* blue

\$62.50 *



* denotes extra charge for larger sizes

* denotes extra charge for larger sizes

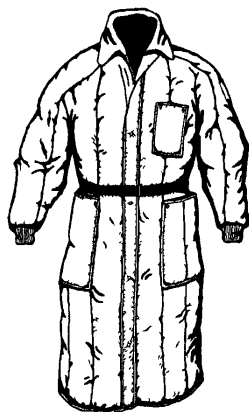
COMFORT

-50°F

RATING

POLAR 10 SUPERVISOR PARKA

#34032NA Blue



Great for use where total coverage for extended time is not needed. Three patch pockets and pencil pocket on sleeve. Waist belt and 10" back center slip.

Reg: S, M, L, XL, 2XL*, 3XL*

\$76.75 *

* denotes extra charge for larger sizes

POLAR 10 FREEZER COAT

#34029NA Blue

#34029LN

Green

\$62.50 *



THE BEST and our most requested freezer coat. Very warm! Use with the

"Polar 10" bib trousers to have the ultimate in cold temperature protection. Three insulated patch pockets with snap flaps. Warm pile (fur-like) collar and elastic across back waist to provide great fit.

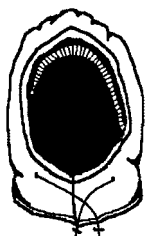
Regular: XS, S, M, L, XL, 2XL, 3XL*, 4XL*, 5XL* blue

Tall: M, L, XL, 2XL*, 3XL*, 4XL* blue

POLAR 10 HOOD

#720009NA Blue

#720009LN Green



Ultra warm Snap-On hood. Same "Polar 10" construction. Drawstring for snug fit.

\$11.75

BEATS THE OTHERS COLD!

The suit
that solved the
zipper problem!

Attached hood with pile lining, knit cuff around face and drawstring with cord-locks.

430-denier nylon oxford urethane-coated shell and 100% nylon taffeta lining

Walls®

One-Piece Polar 10 Freezer Suit with Attached Hood

13 oz. Hollofil® polyester insulation

Raglan sleeves with knit cuffs

Left chest pocket and two large lower patch pockets with snap flaps

The best suit on the market today!
Price and Quality
just the same as it was in 1994.

#22020NA Navy
#22020LN Loden Green

\$105.50*

*Additional charge for 2XL Tall, 3XL, 4XL, and 5XL

COMFORT

-50°F

RATING

SPECIAL FEATURE!

Snap-over storm flap protects zipper and prevents drafts. Flaps run the entire length of the thigh-high zippers with snaps every five inches so warmth stays in and cold stays out

Walls COOLER and DOCK Wear



COOLER COAT

#34042NA Blue

\$37.00*

100% ripstop nylon shell. 100% nylon taffeta lining. 8 oz. Dupont Hollofil® insulation. Two patch pockets and zippered front. Warm knit collars and cuffs.

Reg: S, M, L, XL, 2XL*, 3XL*



\$28.50*

INSULATED HOODED SWEATSHIRT

#KEY 830

50/50 cotton/poly blend shell bonded to 100% polyurethane insulation/nylon vellum lining, knit cuffs and waistband, zippered front with two pockets.

Reg: S, M, L, XL, 2XL*, 3XL*, 4XL*

Tall: M, L, XL, 2XL*, 3XL*, 4XL*

We have a large selection of slight irregulars in these suits.
Only **\$37.50**
ALL SIZES
Super Deal!

1-PC. "COOLER SUIT"

#2487 Blue #2480 Brown

\$45.75*

Ideal for cooler or dock wear. Cotton blend outer shell. Soft, long-lasting nylon lining. 3-oz. Hollofil® insulation. Leg zipper to knee, banded waist with elastic inserts at back, set-in sleeves, and two-way front zipper. Two hip pockets, two swing pockets, and zippered chest pocket.

Short: S, M, L, XL, 2XL*

Reg: S, M, L, XL, 2XL*, 3XL*, (4XL* brown only)

Tall: M, L, XL, 2XL*, 3XL*, (4XL* brown only)



FROCKLINER

#34045NA Blue

Same material and construction as the COOLER COAT. Snap closure.

Two large patch pockets. Knit collar.

Reg: S, M, L, XL, 2XL*, 3XL*

\$48.25*

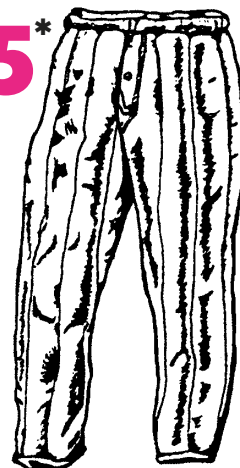
\$27.95*

COOLER PANTS

#54042NA Blue

100% ripstop 200 denier nylon shell with 8-oz. Hollofil® insulation and nylon taffeta lining, elastic waist with snap closure fly and adjustable hem.

Reg: S, M, L, XL, 2XL*, 3XL*



* denotes extra charge for larger sizes

Walls COOLER and DOCK Wear

\$43.50*



#7750 Brown

#7751 Blue

Quilted Duck Jacket

100% tough cotton duck outer shell. 6-oz. Of Hollofil polyester insulation with nylon taffeta lining. Corduroy collar, two large patch pockets with a heavy-duty front zipper with snap over storm flap. Set in sleeves and knit cuffs.

Reg: S,M,L,XL,2XL*,3XL*,4XL*

Tall: M,L,XL,2XL*,3XL*,4XL*



\$67.50*

#15066

Brown

Super Duck Insulated Coverall

100% cotton 12-oz. Duck outer shell. 4-oz. Hollofil polyester insulation with nylon taffeta lining. Two way front zipper and leg zippers to waist with snap over storm flap. Corduroy collar and set-in sleeves. Two chest pockets, two hip pockets and two swing-style pant pockets.

Short: M, L, XL

Reg: M, L, XL, 2XL*

Tall: M, L, XL, 2XL*, 3XL*



\$43.50*

#93003BW

Brown

#93003 Blue

Cotton Duck Insulated Bib Trousers

100% tough cotton outer shell. 4-oz. Hollofil polyester insulation with nylon taffeta lining. Leg zippers to waist. Two swing pant pockets, two hip pockets and two chest pockets. Banded waist with elastic inserts. Heavy duty adjustable suspenders.

Short: S, M, L, XL, 2XL, 3XL

Reg: S, M, L, XL, 2XL*,3XL*,4XL*

Tall: M, L, XL, 2XL*, 3XL*



\$29.00*

#34024NA Blue

Diamond Quilt Jacket

100% nylon ripstop outer shell. 4-oz. Hollofil polyester insulation with nylon taffeta lining. Knit cuffs and collar. Two patch pockets. Front zipper with snap-over storm flap

Reg: S,M,L,XL,2XL*,3XL*,4XL*

Tall: M,L,XL,2XL*,3XL*,4XL*



#1216

Blue

Short Sleeve Coverall

\$23.50*

Non-insulated cotton/poly. Two chest pockets, two swing pant pockets, and two hip pockets.

Short: S, M, L, XL, 2XL*

Reg: S, M, L, XL, 2XL*

Tall: M, L, XL, 2XL*

#5515

Blue

Long Sleeve Coverall

\$38.75*



Non-insulated cotton/poly. Two zippered chest pockets, two swing pant pockets and two hip pockets. Sleeves and leg cuffs have snap take-up closure.

Reg: S, M, L, XL, 2XL, 3XL*

Tall: M, L, XL, 2XL, 3XL*

* denotes extra charge for larger sizes

Walls **MASTER MADE** INDUSTRIAL COLD WEATHER WEAR

We will pay ground freight on FREEZER WEAR orders of \$300 or more!

We have a large inventory of the **MASTER MADE** items shown on this page in a variety of sizes. The garments are items that are on "close-out" due to being discontinued by the manufacturer. These garments are extremely tough.

- Maximum durability with 1000 denier Cordura Plus nylon outer shell
- Windproof and waterproof fabric coating
- Maximum comfort with a smooth, soft, odor-resistant Caprolan nylon lining
- 6-oz. Polyester Hollofil® insulation. Actually feels like more due to the 1000 denier outer shell!

CLOSE-OUT

Due to the close-out nature of this special, certain sizes may not be available. Under each of the garments being closed out are possible sizes that are originally available. With time the availability of sizes will change.

Call NOW to get first choice on these garments. *Please call for size availability! *

#15150 DN

Blue 1-PC. Coverall

- 2-way hip-length leg zippers with snap over storm flap
- 2 chest, 2 hip and 1 inside chest pocket

Sizes available:

Short: L, XL, 2X

Reg: M, L, XL, 2X, 3X, 4X, 5X

Tall: L, XL, 2X



\$67.50

Sizes Medium to 2X-Tall

\$79.00

Sizes 3X and larger

\$51.50

ANY SIZE

#35565 DN

Blue Insulated Coat

- Front zipper with snap-over storm flap
- Concealed draw string at waist
- 2-chest, 2-side, 1-inside chest pocket

Sizes available:

Reg: M, L, XL, 2XL, 3XL Tall: L, XL, 2XL



\$49.50

ANY SIZE

#35574 DN

Blue Insulated Jacket

- Front zipper with snap-over storm flap
- 2-side pockets, 1-inside pocket

Sizes available:

Reg: M, L, XL, 2XL, 3XL Tall: L, XL, 2XL



\$49.50

ANY SIZE

#35580 DN

Blue Insulated Hooded Jacket

- 2-Pc. hood with drawstring
- 2-side pockets, 1-inside chest pocket

Sizes available:

Reg: M, L, XL, 2XL, 3XL Tall: L, XL, 2XL

Wallo **FREEZER SUIT SPECIALS**

FROM MODERN MATERIAL HANDLING

We have a large inventory of these suits in a variety of popular sizes. The suits are items that are on "close-out" due to being discontinued by the manufacturer. These suits are very rugged and tough!



\$59.00

SIZES 42 - 52

\$69.00

SIZES 54 and UP

This suit previously
sold for the low price
of \$67.50 and up ...
Take advantage of this
new bargain price!

#15066 **Brown Insulated 1-Pc. Coverall**

- Extra tough, sturdy 12 oz. 100% cotton outer shell fabric
- Water repellent
- **6 oz.** warm 100% polyester Dupont Hollofil® insulation
- Hip, pants and chest pockets
- Bi-swing action back and elastic inserts at banded waist allow a full range of motion
- Two-way front zipper with storm flap
- Extra pocket for pencil
- Leg zippers to waist with snap-over storm flap

Available Sizes:

Reg: 42, 44, 46, 48, 50, 52, 54, 56, 58, 60

Tall: 44, 46, 48, 50, 52, 54, 56

#15166 **Brown Insulated 1-Pc. Coverall**

- Extra tough, sturdy 12 oz. 100% cotton outer shell fabric
- Water repellent
- **10 oz.** Extra warm 100% polyester Dupont Hollofil® insulation
- Hip, pants and chest pockets
- Bi-swing action back and elastic inserts at banded waist allow a full range of motion
- Two-way front zipper with storm flap
- Leg zippers to waist with snap-over storm flap

Available Sizes:

Reg: 44, 46, 48, 52

Tall: 40, 42, 44, 46, 48, 50, 52

NOW ONLY
\$72.50
FOR ALL SIZES

Similar suits are sold by other
brands at \$127.50! Call us
today for YOUR savings!





HELLY HANSEN (U.S.) INC.

BASE LAYER

The base layer of the Helly Hansen 3 Layer System of Dress is made from a knitted fabric of polypropylene yarn fibers. Polypropylene was invented in the 1960's and has remained as one of the highest performance fibers because of this simple fact: it absorbs the smallest amount of moisture of any natural or synthetic fiber — only .01%. For comparison, polyester fibers and treated polyester fabrics absorb 40 times more moisture than polypropylene.



500

45 702 MEN'S MIDWEIGHT CREW

- 100% polypropylene
- Midweight rib knit construction

SIZES: S-XXL
COLOR: 500 Navy

\$18.75

EITHER PIECE



500

45 104 MEN'S MIDWEIGHT PANT

- 100% polypropylene
- Midweight rib knit construction

SIZES: S-XXL
COLOR: 500 Navy

PROTECTION LAYER

Helly Hansen has developed a broad selection of protective fabrics to perform in the most diverse conditions and climates. There is no one answer to all conditions and all activities. Therefore, Helly Hansen offers a complete collection of outerwear for working in the outdoors. Each garment is developed using the combined principles of weather protection, durability, wearability, and comfort with our patented technologies. The result is our guarantee that our garments will work as hard as you do.

73 250 STORM JACKET

- Water resistant nylon fabric
- Fleece-lined body with taffeta-lined sleeves
- Two front entry zip pockets
- Covered front zipper
- Rib knit cuff and waistband

SIZES: S-XXL
COLOR: 160 True Red

\$59.75



160

73 251 WINDWARD VEST

- Laundered nylon shell with water resistant coating
- Fleece-lined body
- Two front entry zip pockets
- Rib knit waistband and neck

SIZES: S-XXL
COLOR: 990 Black

\$37.00



990

70 650 NORTH SEA SUIT

- High performance suit in Stormbreaker fabric
- Elastic at ankle with snap closure
- Zip ventilation under arm
- Chest pocket, two front pockets, back pocket, and ruler pocket
- Reflective tape at chest and back
- Detachable hood with brim and Velcro® adjustments
- Rib knit cuff inside sleeves
- Double storm flap in front placket
- Loose belt with loops
- Full elastic waist

SIZES: S-XXL
COLORS: 591 Classic Navy/Red

\$135.50



591